

## DATA SHEET

### Cube Moulds



55-C0100/M15

#### General description

The proposed models range from the traditional cast iron version conforming to EN 12390-1 standards , ideal for laboratory use, to the plastic models, very practical for field use and ideal for production control.

Cast iron models 55-C0100/M10 and 55-C0100/M15, can be supplied, on request, complete with certificate of compliance stating the individual verification with certified instruments. For the relevant identification codes, add the suffix C (e.g. 55-C0100/M10C).

#### Standards

- EN 12390-1



55-C0100/P15 Kubo 15, 150 mm plastic cube mould. Supplied complete with polystyrene cover- for save transportation and thermal protection-, base sheet and stopper.

## DATA SHEET



55-C0100/P20, 55-C0100/P15, 55-C0100/P10



55-C0100/P15A Precise and economic , metal bottom and rims for long life, easy demoulding, easy to handle, ideal for site use.



55-C0100/M10

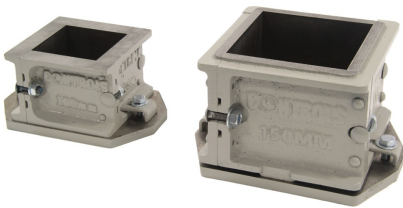
## DATA SHEET



55-C0100/M20



55-C0100/P102



55-C0100/M10L, 55-C0100/M15L Cube moulds

## DATA SHEET



55-C0100/P156 Cube moulds



55-C0100/P25 Detail for plastic cube mould

## Products

### 55-C0100/P102

100 mm two gang plastic cube mould

### 55-C0100/P156L

150 mm plastic cube moulds complete with stopper. Pack of 6 pieces.

### 55-C0100/M10

100 mm single cube mould to EN-12390-1

### 55-C0100/M10L

100 mm cast iron cube mould.

### 55-C0100/M15

150 mm cast iron cube mould to EN 12390-1

### 55-C0100/M15L

150 mm cast iron cube mould. 4 parts model

### 55-C0100/M20

200 mm steel cube mould

### 55-C0100/M30

300 mm single cube mould

## DATA SHEET

### 55-C0100/P10

100mm plastic cube mould complete with stopper

### 55-C0100/P15

KUBO 15, 150 mm plastic cube mould complete with cover, stopper and plastic sheet

### 55-C0100/P15A

Mould for 150mm cube. Hard plastic body and steel base. Easy opening system.

### 55-C0100/P156

KUBO 15, 150 mm plastic cube moulds complete with cover, stopper and plastic base lining. Pack of 6 pieces.

### 55-C0100/P20

200 mm plastic cube mould complete with stopper

### 55-C0100/P25

250 mm plastic single cube mould. Weight 3 kg approx.

## Accessories and consumables

### 55-C0140

Tamping rod dia 16 mm x 600 mm

### 55-C0100/P10K

Plastic sheet for 100 mm cube moulds (50 pz)

### 55-C0100/P15K

Plastic sheet for KUBO15 (pack of 50)

### 55-C0100/P15S

Spare caps for KUBO plastic moulds. Pack of 100 pcs

### 55-C0100/P15W

Polystyrene cover for KUBO 15 (pack of 20)

### 55-C0139/A

Demoulding system 10 kg can

### 55-C0140/1

Tamping bar 380 mm long x 25 mm square

### 55-C0140/3

Tamping rod 10 mm dia x 250 mm

### 55-C0119/5

Specimen mould spanner

### 55-C0140/2

Straight edge

### 55-C0100/P15P

Polyuretane cover for Kubo15 mould.

### 55-C0100/P15H

## DATA SHEET

---

Handle for plastic cube moulds KUBO 55-C0100/P15